



# SWIPE

## ANTI-FOG

**10** Times  
Longer

**Reactivate with a swipe**



**MADE IN JAPAN**



# SWIPE

## ANTI-FOG

# Reactivate with a swipe!

After extended research, a new generation of anti-fog technology, "SWIPE ANTI-FOG" has been developed. If the swimming goggle lens fogs, you can reactivate the anti-fog by simply swiping the lens with your finger. Compared to other VIEW goggles, the new SWIPE goggle anti-fog lasts 10 times longer.



Anti-fog performance lasting

**10**  
times longer



Swiping Lens durability test

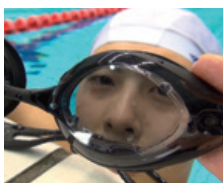
**1500**  
times



Lastest better

(User test commentary)

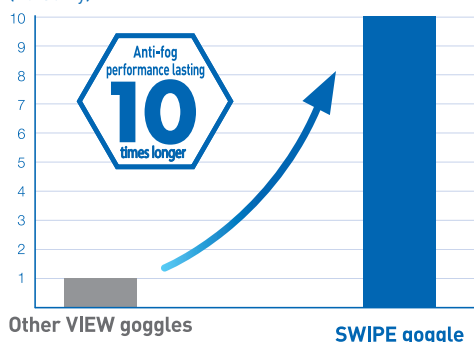
**97%**



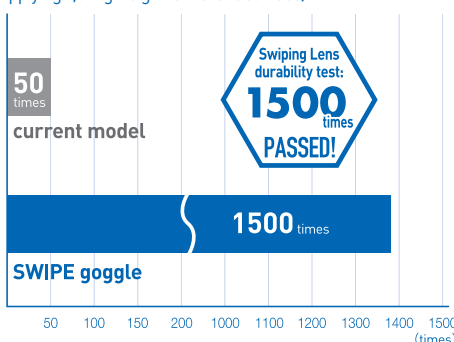
Did the anti-fog last better than other VIEW goggles?



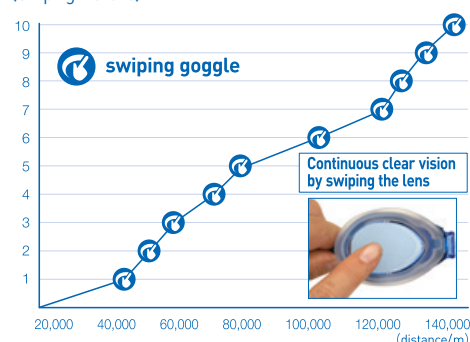
(Durability)



(Applying 1,000g weight to the lens surface)



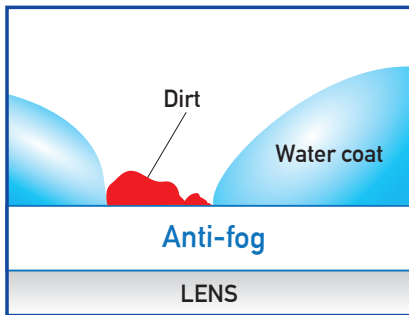
(Swiping the lens)



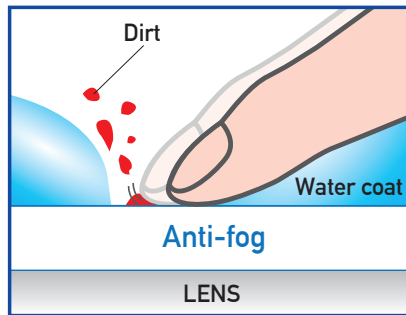
## 《 How it works 》

- **Anti-fog performs when there is a coating of water on the inside lens surface.**  
Please wet the inside lens surface before usage.
- **The special anti-fog process is on the inside lens surface.**  
When fogging or distortion occurs from dirt build-up or other particles sticking to the lens, firmly swipe 5 to 10 times with your finger.

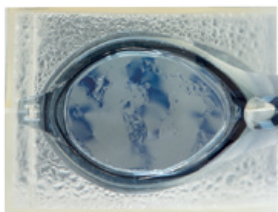
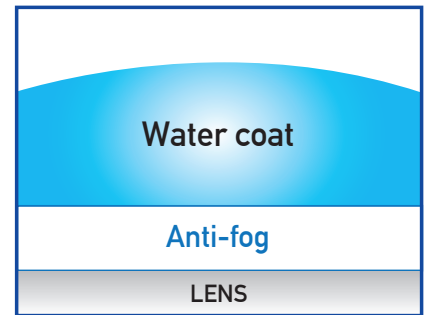
### 1 When lens fogs



### 2 Remove dirt by scrubbing



### 3 Clear vision will be restored



Fogging



Clear



## 《 How to maintain 》

- **Wet the inside lens surface and firmly swipe a few times with your finger.**  
If dirt or other particles stick to the lens that your finger cannot reach, please rub the lens with a soft, wet towel.
- **Anti-fog will eventually deteriorate with long term use.**  
When anti-fog does not perform as before, please use an anti-fog liquid from our company. Other company's anti-fog liquid may cause damage or cracks to the plastic lens.



Wet the lens surface



Swipe the lens 5 to 10 times with your finger strongly



Rinse the lens surface with water

Product Features

**Blade  
ORCA**

Ultimate Fit  $\times$  Low Resistance

CLEAR FRAME SERIES

**POINT 1** The transparent frame allows a lot of light transmission for a sense of openness, and provides a wide view that a swimmer requires.



**POINT 2** Precise “blur, gap” control to the limit, and balance of a firm grip and flexible fit



RACING

Shape delivering low resistance Ultimate fitting.

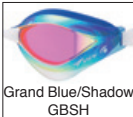
**Blade  
ORCA**



NEW

**V230ASAMC**

- Colors: Grand Blue/Shadow, Smoke/Orange
- Materials: Eye cup, Strap adjuster and Frame; Polycarbonate Strap and Nose bridge (Sizes: XS, S, M & L); T.P.E.



Grand Blue/Shadow  
GBSH



Smoke/Orange  
SKOR



H182  
W60  
D50  
(mm)

**Blade  
ORCA**



NEW

**V230ASAC**

- Colors: Blue, Smoke
- Materials: Eye cup, Strap adjuster and Frame; Polycarbonate Strap and Nose bridge (Sizes: XS, S, M & L); T.P.E.



Blue  
BL



Smoke  
SK



H182  
W60  
D50  
(mm)



## Function

### Say goodbye to Panda marks!

"The pressure marks around my eyes take a long time to go away, so I can't go shopping after I swim." In response to remarks like this, we decided to use "ultra soft material" in our new goggles, so the face pad fits gently on to the skin. The fitting sensation is like nothing you've felt before. We also use a larger size than conventional types, so pressure against the face is lessened. This causes fewer marks around the eyes, so they disappear sooner.



### Easy adjustment.

Only the strap needs to be adjusted. The length is adjusted simply by hooking the strap holes over the bulges of the strap tie. Even women with long fingernails can easily use it.



### A new fitting sensation, soft to skin.

VIEW developed these goggles by integrating "ultra soft material" with "firm material." Through this new manufacturing process, the "ultra soft material" can now be used in the face pad. The "firm material" is used for the frame surrounding the lens, while the "ultra soft material" is used for the face pad section that makes direct contact with the skin. The soft material fits gently against the face.

## FITNESS

## SELENE



NEW

### V820ASA (PAT.)

- Colors: Smoke, Blue, Brown, Clear Light Blue, Lavender, Aqua Marine
- Materials: Eye cup, Strap adjuster; Polycarbonate Face pad and Strap; T.P.E.



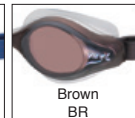
H182  
W60  
D50  
(mm)



Smoke  
BK



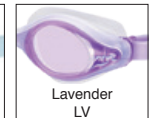
Blue  
BL



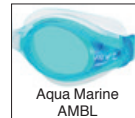
Brown  
BR



Clear Light Blue  
CLB



Lavender  
LV



Aqua Marine  
AMBL

Wide field of vision for better fit and feel.  
Silicone goggles that are easy on your skin.



NEW

### V630ASAM

- Colors: Black/Blue, Black/Dark Silver, Blue/Emerald
- Materials: Eye cup, Strap adjuster; Polycarbonate Face pad and Strap; Silicone Nose bridge (Sizes: S, M & L); T.P.E.



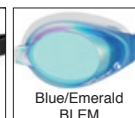
H182  
W60  
D50  
(mm)



Black/Blue  
BKBL



Black/Dark Silver  
BKDSL



Blue/Emerald  
BLEM

NEW

### V630ASA

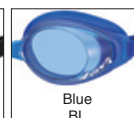
- Colors: Black, Blue, Aqua Marine Black, Lavender
- Materials: Eye cup, Strap adjuster; Polycarbonate Face pad and Strap; Silicone Nose bridge (Sizes: S, M & L); T.P.E.



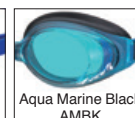
H182  
W60  
D50  
(mm)



Black  
BK



Blue  
BL



Aqua Marine Black  
AMBK



Lavender  
LV



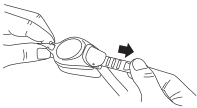
Function

Long Lasting (The lens guard prevents scratches.)

The protruding goggles rims keep the lenses from becoming scratched when dropped, making the goggles last longer.

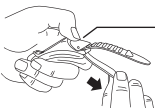


Adjusting the strap length



For shorter length

Pull the end of the strap in the direction of the arrow to shorten the strap length.



Push down on the lens side of the buckle.

For longer length

If the strap is too tight, push the ratchet buckle (spot near the lens) and pull the inner part of the strap toward the direction on the arrow as shown.

YOUTH

Simply pull to fit you perfectly. VIEW adopts the ratchet-type buckle.



NEW

V730JASA

- Colors: Aqua Marine, Blue, Lime Green/Yellow, Pink
- Materials: Eye cup and Ratchet buckle; Polycarbonate Face pad and Strap; Silicone
- Nose bridge (Sizes: XS, S, M & L); T.P.E.



Aqua Marine AM



Blue BL



Lime Green/Yellow LGY



Pink P



H172  
W55  
D47  
(mm)

OPTICAL

SWIPE Corrective Lenses



NEW

VC580AS

- Colors: Clear Light Blue, Smoke
- Materials: Eye cup; Polycarbonate
- Face pad; T.P.E



Clear Light Blue LB



Smoke SK

LB			SK		
-1.0	-5.5	+1.5	-1.0	-5.5	+1.5
-1.5	-6.0	+2.0	-1.5	-6.0	+2.0
-2.0	-6.5	+2.5	-2.0	-6.5	+2.5
-2.5	-7.0	+3.0	-2.5	-7.0	+3.0
-3.0	-8.0	+3.5	-3.0	-8.0	+3.5
-3.5	-9.0	+4.0	-3.5	-9.0	+4.0
-4.0	-10.0	+4.5	-4.0	-10.0	+4.5
-4.5		+5.0	-4.5		+5.0
-5.0		+6.0	-5.0		+6.0

Parts kit for C9120BS SWIPE corrective lens



NEW

VPS570A

- Colors: Cordon Blue, Clear, Black
- Materials: Ratchet buckle; Polycarbonate
- Strap; Silicone
- Nose bridge (Sizes: S, M & L); T.P.E.



Black BK



Cordon Blue CB



Clear CL

## Technical Features



Tabata's anti-fog uses a water layer to avoid fogging. However when oil or other particles stick to the lens, the anti-fog performance decreases. "SWIPE ANTI-FOG" can clean the lens by 5 to 10 finger swipes and clear vision will be restored. Compared to other VIEW goggles, the new SWIPE goggle anti-fog lasts 10 times longer.



VIEW's premium grade silicone resists stretching and fatigue from prolonged use in chlorine, reducing leakage and replacement.



VIEW's UV Cut technology provides superior protection from harmful ultraviolet (U.V.) rays. Increasing exposure to U.V. rays which damage the skin and eyes has become a serious problem. U.V. protection provides greater eye protection during outdoor use.



VIEW's Anti-Bacterial treatment retards bacterial growth on the goggles surface ensuring a sanitary goggle for your child. Bacteria can easily be picked up from pool decks, locker rooms or other areas causing sickness.



VIEW's premium grade Silicone Strap resists stretching and fatigue from prolonged use in chlorine.



VIEW's Mirrored Lens reduces glare that can impair the swimmer's vision by reflecting sun light. This feature improves swimmer's vision.

## In only 20 seconds, the VIEW SWIPE Optical Lens system can be turned into goggles equipped with corrective lenses.

This requires only an add-on assembly rather than a complete exchange of lenses, so the goggle does not need to be taken apart.



The nose bridge is inserted through the lenses.



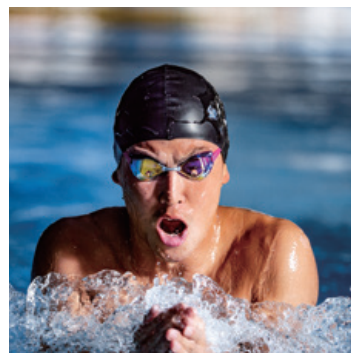
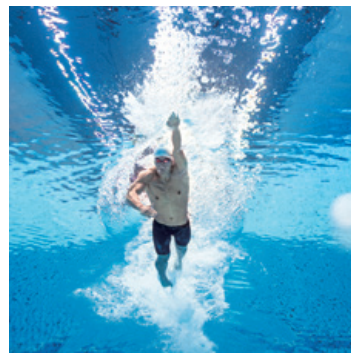
The side clips are clipped onto the eye-cups by applying light pressure.





# #viewswim

Hashtag on Instagram!



## VIEW Design Performance.

VIEW has evolved into the product we see today from our determination to develop original, cutting edge swimming equipment.

VIEW released the world's first interchangeable prescription lens goggles in 1991. Our specialization then focused on the children's market in 1994. In 2004, VIEW released into the racing market, the "Blade" goggle featuring significantly reduced resistance. This low resistance technology led to the development in 2011 of the ultimate racing goggle, the "Blade Zero". The Blade series is supported by many competitive swimmers today. To take technology to the next level, VIEW sought to improve on its market leading anti-fog treatment. In 2018 "Swipe anti-fog" was launched. The Swipe anti-fog is recovered by swiping the lens surface of the swimming goggles.

All of these products have a highly functional design and purpose, created with innovation and precision. VIEW is determined to continue to develop original and highly precise products to meet our customer's demands without compromise. Functional design for performance is paramount to VIEW's innovative concepts. To deliver the best performance always comes one step before design.

<https://view-swim.com/>



TABATA USA, INC.  
2380 Mira Mar Ave.  
Long Beach, CA 90815  
U.S.A.  
Toll Free: 800-482-2282  
T: 562-498-3708  
(Country Code: 1)  
F: 562-344-9458 (Sales)  
F: 562-498-1390 (Accounting)  
info@tusa.com

TABATA JAPAN CO., LTD.  
1-3-17, Higashikomagata,  
Sumida-ku, Tokyo  
Japan 130-0005  
T: 03-3624-2816  
F: 03-3623-9902  
(Country Code: 81)  
www.tabata.jp  
pr@tabata.co.jp

TABATA JAPAN MFG.  
(IBARAKI FACTORY)  
651-2 Industrial Park,  
Hitachiomiya City, Ibaraki  
Japan 319-2134  
T: 0295-53-3135  
(Country Code: 81)

TABATA AUSTRALIA PTY. LTD.  
4D James Ruse Business Park,  
6 Boundary Road, Northmead  
NSW 2152  
T: (0)2-9890-4555  
F: (0)2-9890-5222  
(Country Code: 61)  
www.viewswim.com.au  
info@tabata.com.au

TABATA EUROPE CORPORATION B.V.  
Watervoorst 2, 1046 BG  
Amsterdam  
The Netherlands  
T: 020-58-11-280  
(Country Code: 31)  
info@tusa.nl

TABATA TAIWAN MFG. CO., LTD.  
256, Huanqu W. Rd. Dayuan  
Township  
Taoyuan County 33742  
Taiwan, R. O. C.  
T: 03-386-5100  
F: 03-386-5103  
(Country Code: 886)  
info@tabata.com.tw

Every effort is made to ensure that the information contained in this catalog is accurate at the time of printing. Designs, features, specifications, and colors are all subject to change without notice.

TABATA CO., LTD. © All rights are reserved. All models are subject to change without notice.



Printed in Taiwan.